

# MAY'S FLOWERS

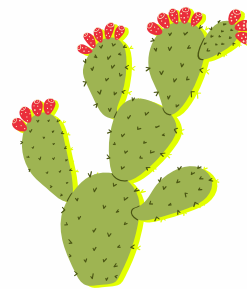
MEALY BLUE  
SAGE



LANTANNA



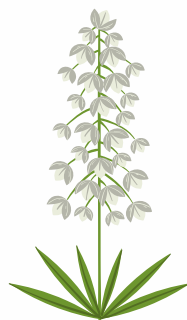
PRICKLY PEAR



SILVERLEAF  
NIGHTSHADE



YUCCA



MEXICAN HAT



THISTLE



PRICKLE POPPY



## CAN YOU FIND THESE?

AS YOU EXPLORE THE PARK, KEEP AN EYE OUT FOR THESE NATIVE PLANTS THAT BLOOM THIS TIME OF YEAR! YOU CAN FIND BLOOMS AT OUR **WILDSCAPE DEMO GARDEN**, OUR **BLANCO SIDE BUTTERFLY GARDEN**, ALONG THE **TOBIN LAND BRIDGE**, AND IN THE MEADOW ALONG THE **SALADO GREENWAY TRAILHEAD**! VISIT OUR MAP ONLINE, AT [WWW.PHILHARDBERGERPARK.ORG](http://WWW.PHILHARDBERGERPARK.ORG)

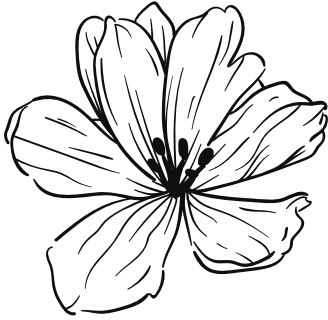
WHICH PLANTS GROW IN THE SHADE, AND WHICH ONES GROW IN FULL SUN? WHAT KINDS OF WILDLIFE [BIG OR SMALL] WILL VISIT THESE PLANTS?

 **PHIL HARDBERGER  
PARK CONSERVANCY**

# Floral Observations

Use this page to illustrate some of the flowers you see in the park! Add a small description too! Then, try to look up the proper names when you are home!

*Example Observation:*



*Note: White flower, small light green leaves*

*Observation 1:*

*Observation 2:*

*Observation 3:*

*Observation 4:*

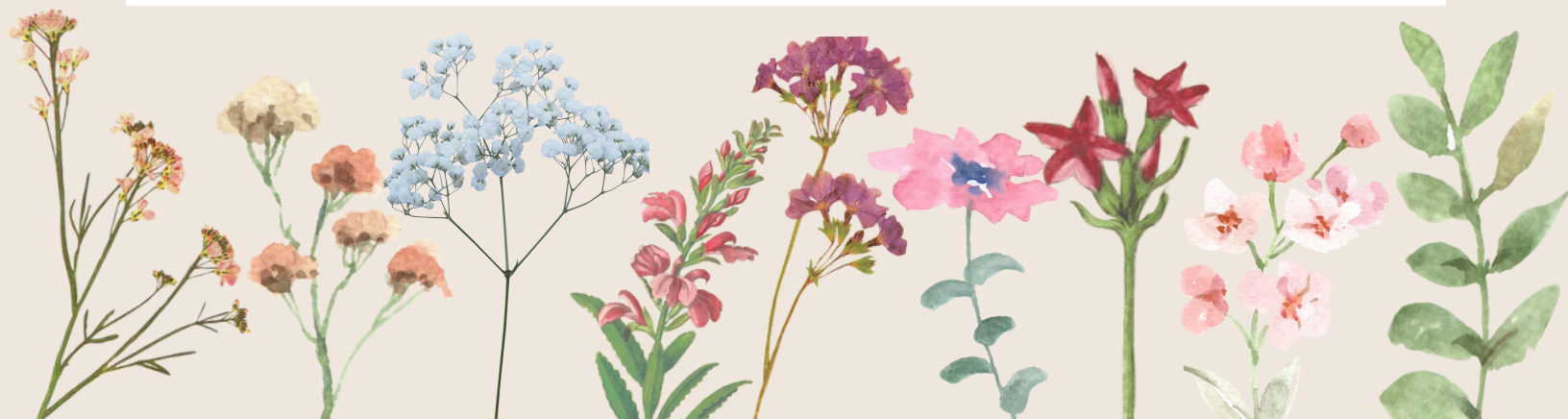
*Observation 5:*

# Peat Pot Planting

**Materials:** Peat Pots, Wildflower Seeds, Soil, Sunlight, Water, Care



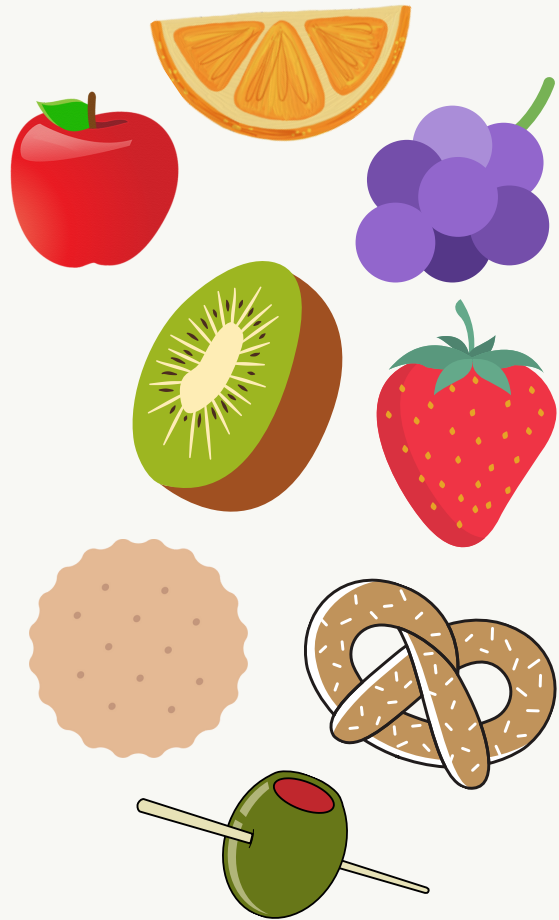
**Directions:** In your kit you will find a peat pot and some native wildflower seeds! Next you will need to gather some soil. You want to fill your peat pot 3/4 with soil before you place your seeds [only a few seeds per pot], then sprinkle a little bit of soil on top to cover them. Use a spray bottle to gently water your soil. Keep the soil moist -but not soggy- until the seeds begin to sprout, then watch them grow! Once the plants are large enough, you can plant the entire peat pot into the ground or into a larger pot. Most native flowers like full sun. If you have some extra seeds, you can repeat the process with some cardboard egg cartons or cardboard tubes!



# Fruity Flower Snacks



## Optional Ingredients:



## Directions:

Ask an adult to help with the washing and cutting of fruit into slices. You can lay the slices on a plate and make a flower by arranging the larger slices around a grape or berry. You can either use a cracker, pretzel or rice cake as a base. You can make things stick together with icing, cream cheese, or toothpicks. Have fun with your snack, and try to make some pretty and tasty flowers!