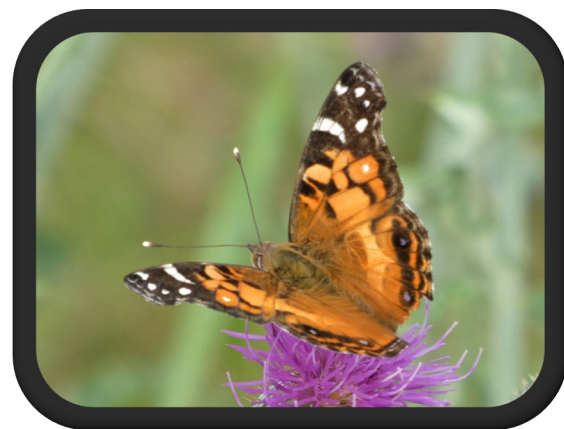


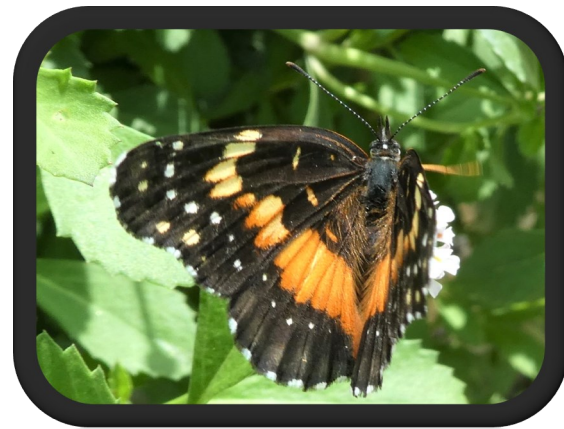
NATIVE PLANT WILDSCAPE DEMONSTRATION GARDEN

BUTTERFLIES

Adult butterflies are active during the day, probing flowers for nectar to fuel their bodies. They favor flat, clustered flowers on which they can land easily. Butterflies pick up pollen on their bodies and legs and transport it from flower to flower as they move between plants. Varying by season, the butterfly species we see here pollinate our blooming plants almost as effectively as some bees. Photos by Patsy Kuentz. Poster design by Lora Reynolds.



American Lady
on Texas Thistle



Bordered Patch
on Frogfruit



Celia's Roadside-
Skipper on
Mealy Blue Sage



Checkered White
on Frogfruit



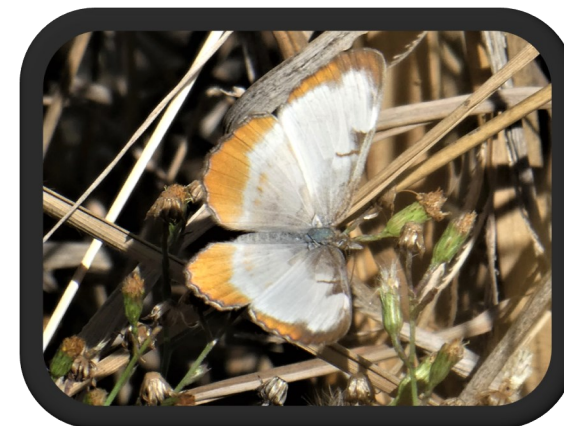
Cloudless Sulphur
on Autumn Sage



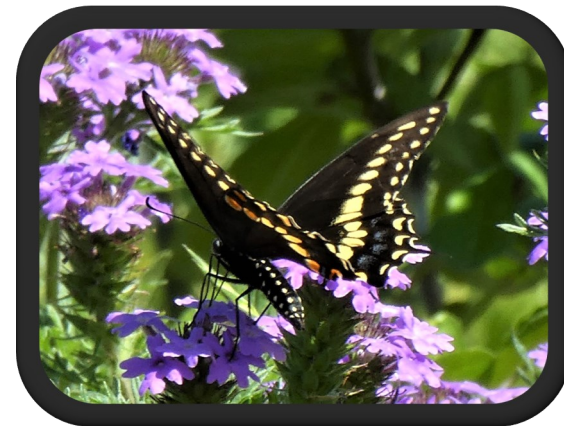
Common/White
Checkered-Skipper
on Mulch



Common Buckeye
on Gregg's
Mistflower



Common Mestra
on Noseburn



Black Swallowtail
on Prairie Verbena



Fiery Skipper on
Gregg's Mistflower



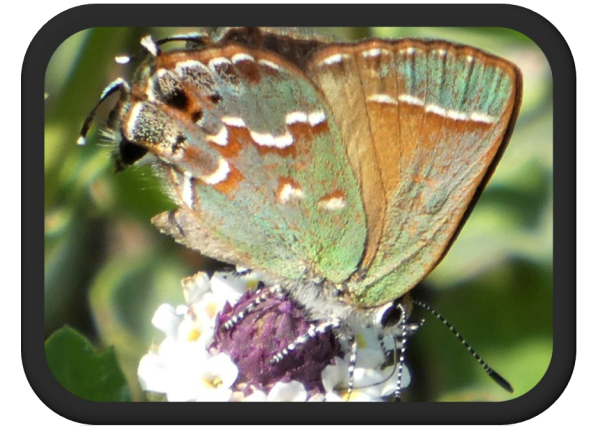
Gray Hairstreak
on Blackfoot Daisy



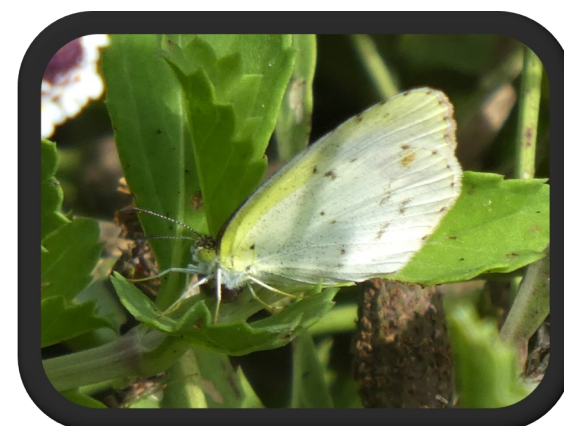
Gulf Fritillary on
Purple Coneflower



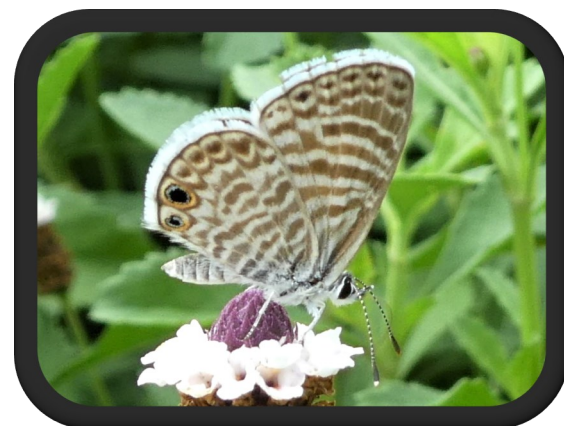
Horace's
Duskywing on
Mealy Blue Sage



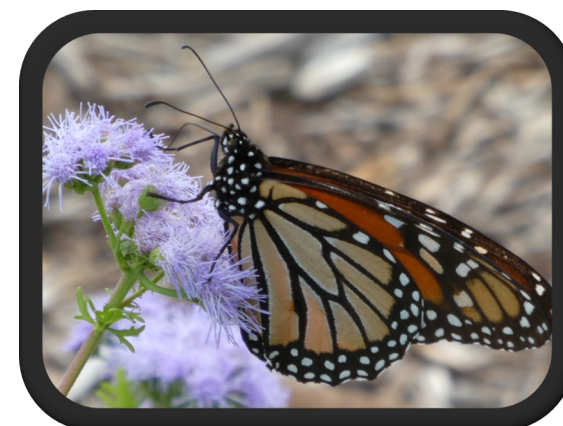
Juniper Hairstreak
on Frogfruit



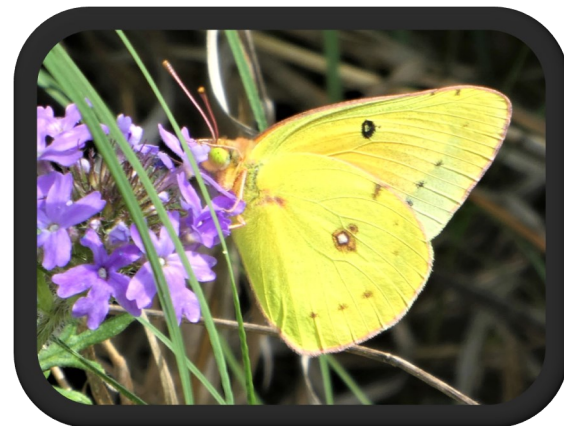
Little Yellow
on Frogfruit



Marine Blue
on Frogfruit



Monarch
on Gregg's
Mistflower



Orange Sulphur
on Prairie Verbena



Queen
on Climbing
Milkweed Vine



Southern Dogface
on Gregg's
Mistflower



Variegated Fritillary
on Mulch